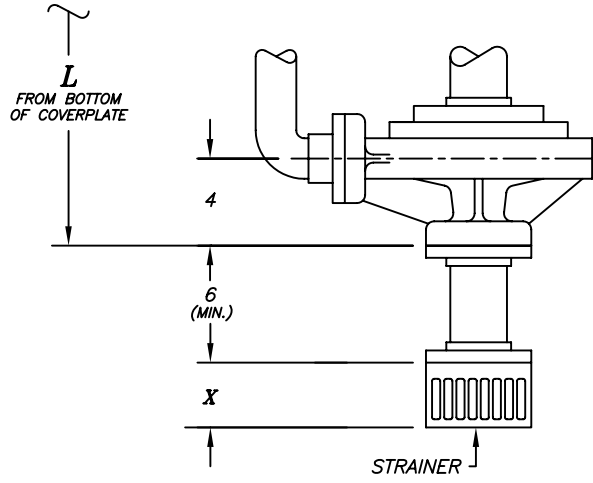
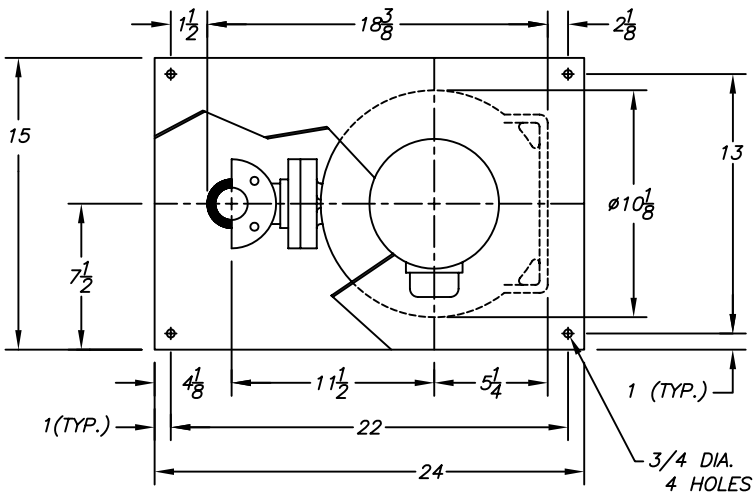
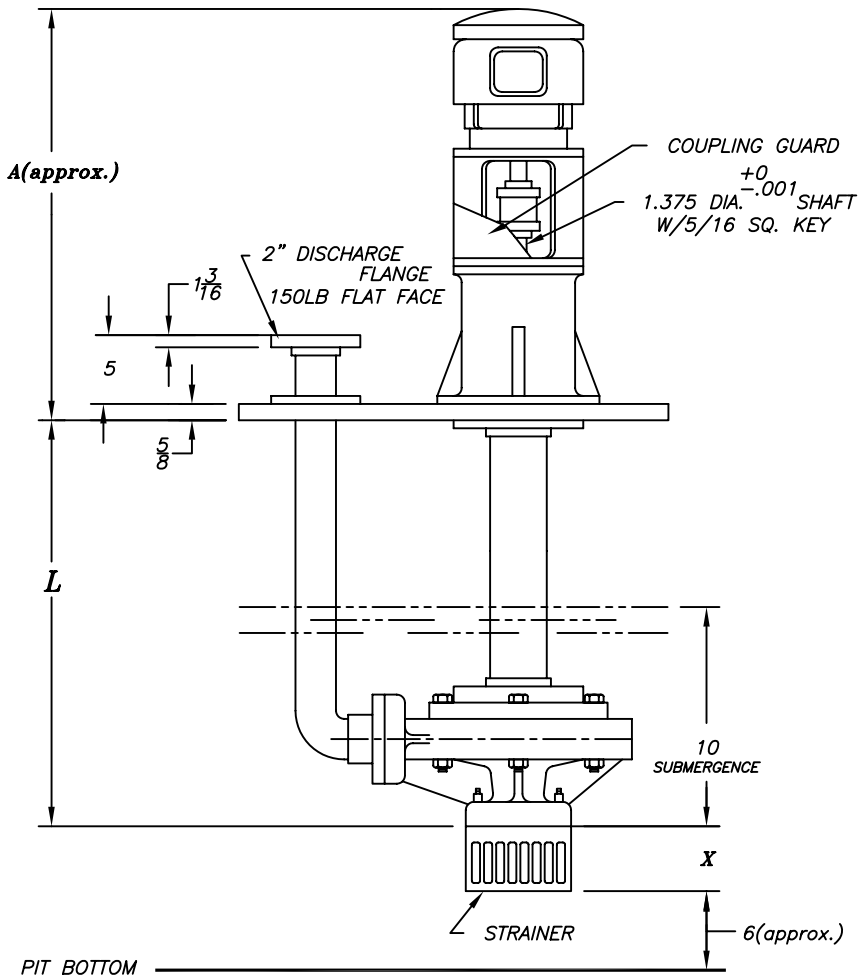


DATE	SYL	REVISION RECORD	AUTH.	DR.	CHK.



**TAILPIPE ASSEMBLY (OPTIONAL)**



MOTOR FRAME	A
143TC/145TC	34 3/8
182TC/184TC	37 7/8
213TC/215TC	41 1/2
254TC/256TC	46 7/8

PUMP SIZE	X
1X1 1/2X6	3 1/8
1 1/2X3X6	4 1/2
2X3X6	4 1/2
1X1 1/2X8	3 1/8

MOTOR
HP                  RPM
PH                  HZ                  VOLTS
ENCL.
FRAME

CUSTOMER
CUST. P.O.#
TAG:
FYBROC S/N

- NOTES:
- "L" DIMENSION IS SPECIFIED BY CUSTOMER WHEN ORDER IS ENTERED. "L" MAX.=48"
  - MOTOR SHIPPED SEPARATELY FOR FIELD MOUNTING BY OTHERS.
  - ALL DIMENSIONS IN INCHES.
  - EXPANSION JOINT IS RECOMMENDED FOR DISCHARGE CONNECTION.
  - COVERPLATE TO BE SUPPORTED ON ALL FOUR SIDES.
  - ALL FLANGE GASKETS ARE TO BE FULL FACE GASKETS.

PIT BOTTOM

<b>Fybroc Division</b>		TELFORD, PA 18969
<b>7500 GROUP 1</b>	SCALE	DRAWN BY <b>829</b> APPROVED BY
TITLE <b>OUTLINE DRAWING</b>		
DATE <b>5/27/94</b>	DRAWING NUMBER <b>C40140</b>	REV.