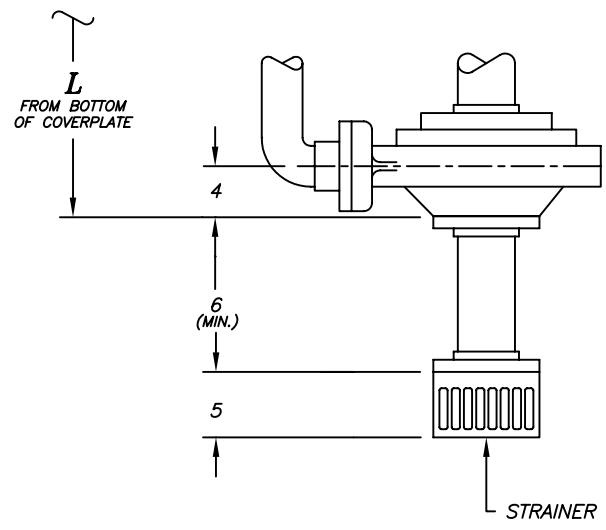
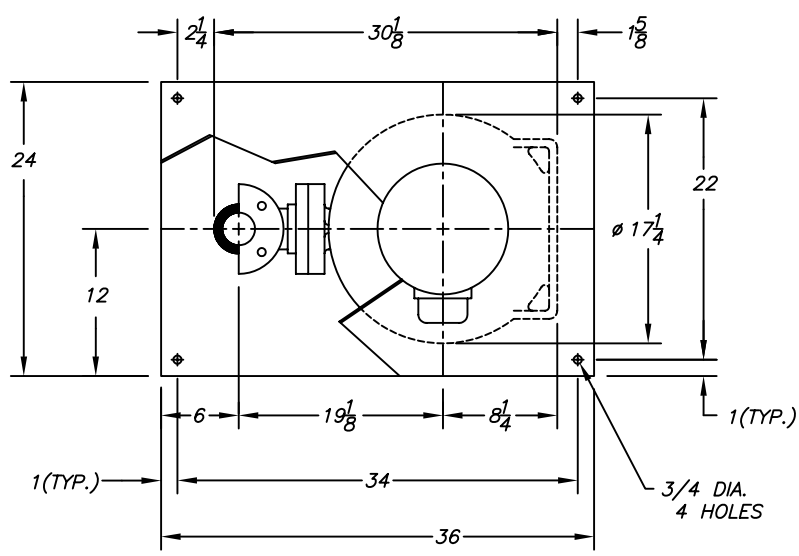
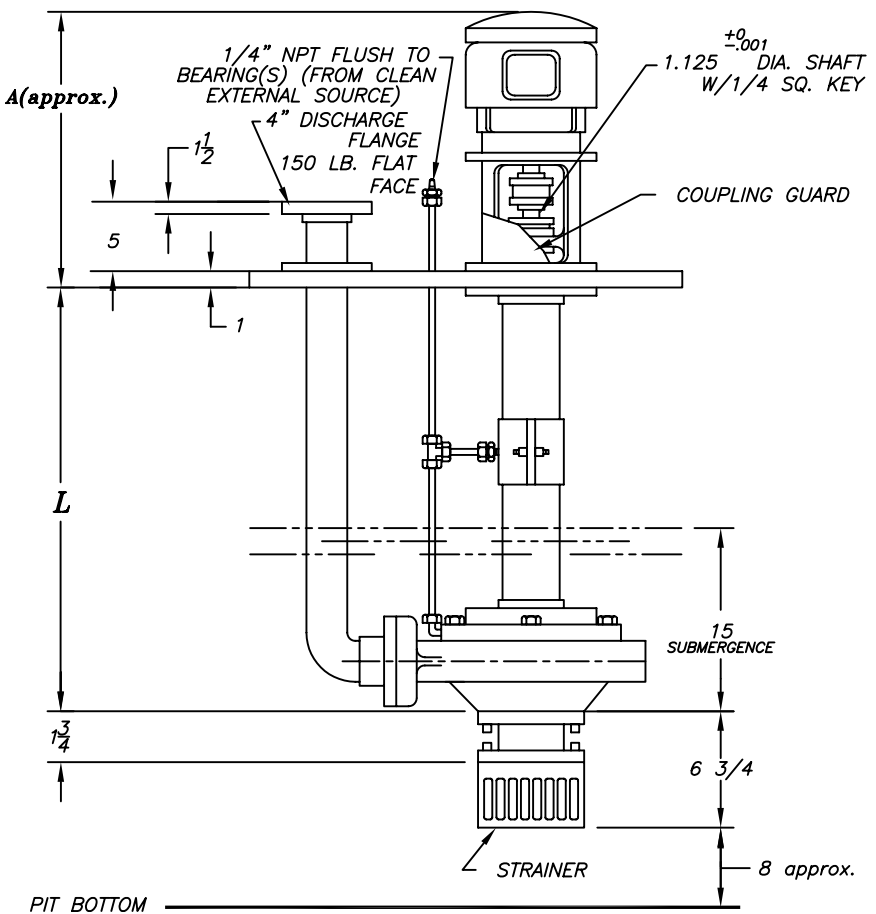


DATE	SYM.	REVISION RECORD	AUTH.	DR.	CHK.



**TAILPIPE ASSEMBLY**  
(OPTIONAL)



MOTOR FRAME	A
182TC/184TC	27 3/8
213TC/215TC	31 5/8
254TC/256TC	36 7/8
284TC/286TC	37 3/8
324TC/326TC	40 7/8

MOTOR		
HP	RPM	
PH	HZ	VOLTS
ENCL.		
FRAME		

CUSTOMER	
CUST. P.O.#	
TAG:	
FYBROC S/N	

NO.	L	BRGS	WEIGHT APPROX.
1	18 3/8 (1' 6-3/8")	1	-
2	24 3/8 (2' 3/8")	1	-
3	30 3/8 (2' 6-3/8")	1	-
4	36 3/8 (3' 3/8")	1	-
5	42 3/8 (3' 6-3/8")	2	-
6	48 3/8 (4' 3/8")	2	-
7	54 3/8 (4' 6-3/8")	2	-
8	60 3/8 (5' 3/8")	2	-
9	66 3/8 (5' 6-3/8")	2	-
10	72 3/8 (6' 3/8")	3	-
11	78 3/8 (6' 6-3/8")	3	-
12	84 3/8 (7' 3/8")	3	-
13	90 3/8 (7' 6 3/8")	3	-
14	96 3/8 (8' 3/8")	3	-
15	102 3/8 (8' 6-3/8")	4	-
16	108 3/8 (9' 3/8")	4	-
17	114 3/8 (9' 6-3/8")	4	-
18	120 3/8 (10' 3/8")	4	-
19	126 3/8 (10' 6-3/8")	4	-

\*--LESS, MOTOR AND TAILPIPE

- NOTES:
- MOTOR SHIPPED SEPARATELY FOR FIELD MOUNTING BY OTHERS.
  - ALL DIMENSIONS IN INCHES.
  - EXPANSION JOINT IS RECOMMENDED FOR DISCHARGE CONNECTION.
  - COVERPLATE TO BE SUPPORTED ON ALL FOUR SIDES.
  - ALL FLANGE GASKETS ARE TO BE FULL FACE GASKETS.

<b>Fybroc Division</b>		TELFORD, PA 18969	
5500 4X4X10	SCALE ~	DRAWN BY 823	APPROVED BY
TITLE OUTLINE DRAWING			
DATE 5/10/94	DRAWING NUMBER C40134		REV.

PIT BOTTOM