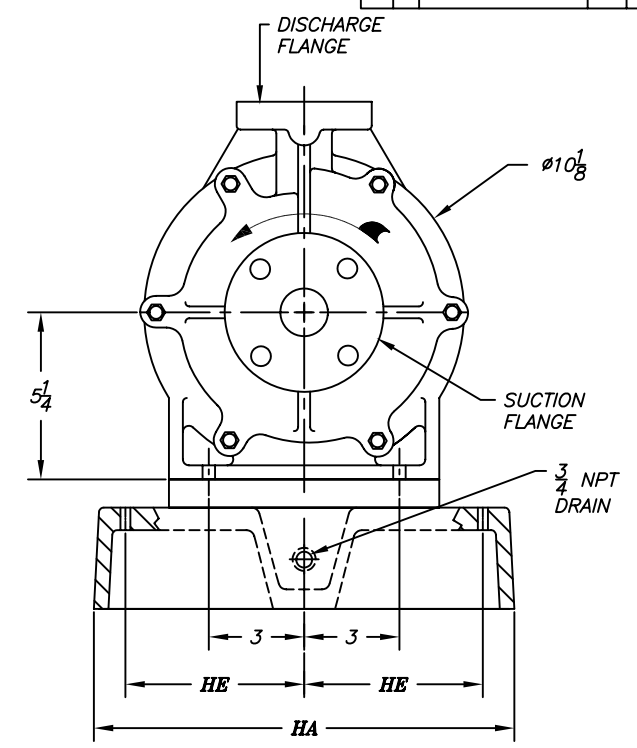
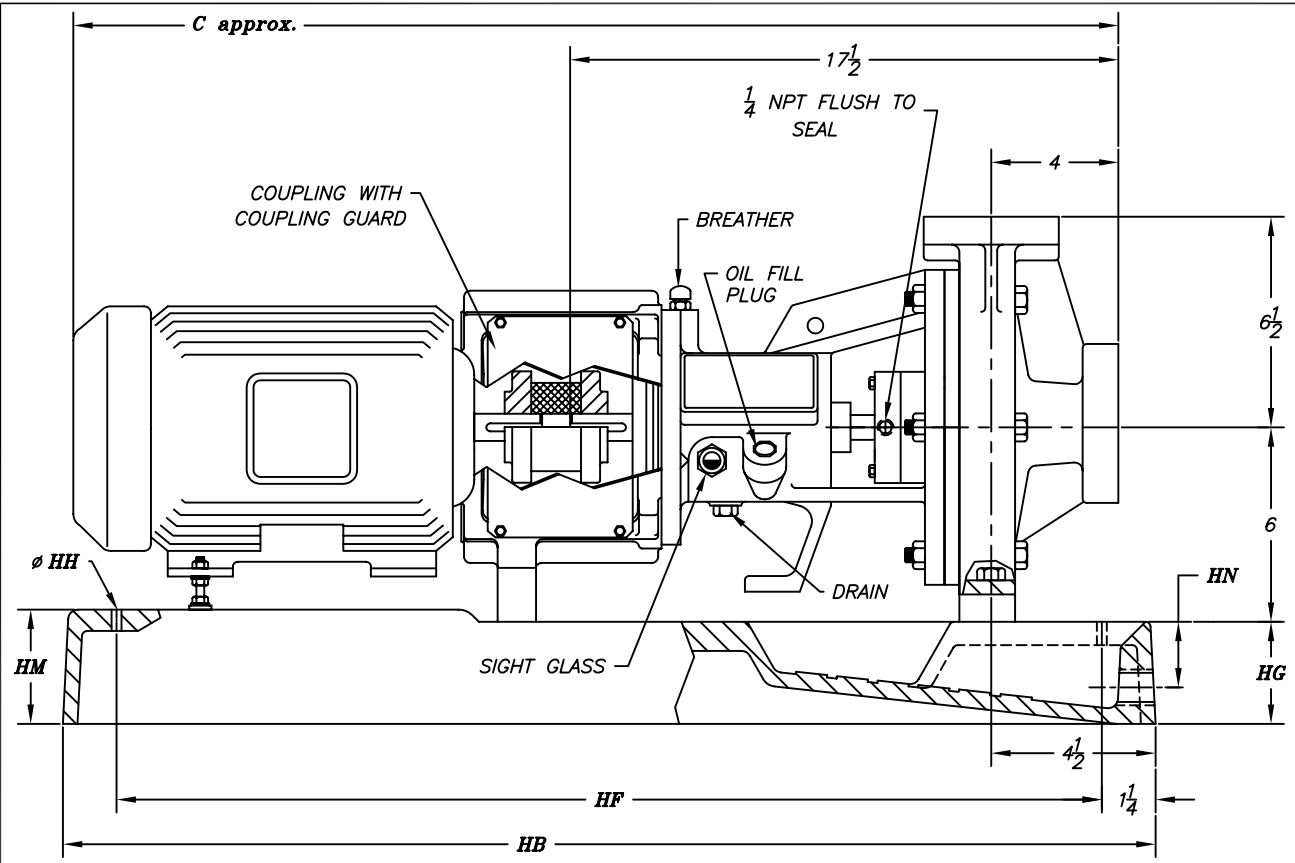


DATE	SYM.	REVISION	RECORD	AUTH.	DR.	CK.



MOTOR FRAME	C
143TC/145TC	33 3/4
182TC/184TC	34 7/8
213TC/215TC	39 5/8
254TC/256TC	43 3/4

MOTOR	HP	RPM
PH	HZ	VOLTS
ENCL.		
FRAME		

FLANGE	O.D.	THICK.	B.C.	# OF HOLES	SZ. OF HOLES
1	4 1/4	7/8	3 1/8	4	5/8
1 1/2	5	1 1/8	3 7/8	4	5/8
2	6	1 1/8	4 3/4	4	3/4
3	7 1/2	1 1/8	6	4	3/4

NOTES:
 (1) ROTATION IS COUNTERCLOCKWISE FACING SUCTION FLANGE
WARNING: DO NOT OPERATE WITHOUT LIQUID IN PUMP. DO NOT OPERATE IN REVERSE ROTATION.
 (2) ALL DIMENSIONS IN INCHES.
 (3) FLANGES ARE ASME/ANSI B16.5 CLASS 150lb. FLAT FACE.

PUMP SIZE	SUCT.	DISCH.	MOTOR FRAME	BASE PLATE	HA	HB	HE	HF	HG	HH	HM	HN
1X1-1/2X6	1 1/2	1	143TC-184TC	1T	10	35	4	32 1/2	2 5/8	3/4	3 3/8	1 11/16
			213TC-215TC	2T	12	39	4 1/2	36 1/2	2 7/8	3/4	2 7/8	1 15/16
			254TC-256TC	1	12	45	4 1/2	42 1/2	3 3/4	3/4	2 3/4	1 7/8
1-1/2X3X6	3	1 1/2	143TC-184TC	1T	10	35	4	32 1/2	2 5/8	3/4	3 3/8	1 11/16
			213TC-215TC	2T	12	39	4 1/2	36 1/2	2 7/8	3/4	2 7/8	1 15/16
			254TC-256TC	1	12	45	4 1/2	42 1/2	3 3/4	3/4	2 3/4	1 7/8
2X3X6	3	2	143TC-184TC	1T	10	35	4	32 1/2	2 5/8	3/4	3 3/8	1 11/16
			213TC-215TC	2T	12	39	4 1/2	36 1/2	2 7/8	3/4	2 7/8	1 15/16
			254TC-256TC	1	12	45	4 1/2	42 1/2	3 3/4	3/4	2 3/4	1 7/8
1X1-1/2X8	1 1/2	1	143TC-184TC	1T	10	35	4	32 1/2	2 5/8	3/4	3 3/8	1 11/16
			213TC-215TC	2T	12	39	4 1/2	36 1/2	2 7/8	3/4	2 7/8	1 15/16
			254TC-256TC	1	12	45	4 1/2	42 1/2	3 3/4	3/4	2 3/4	1 7/8

CUSTOMER
CUST. P.O.#
TAG:
FYBROC S/N

Fybroc Division TELFORD, PA 18969

1500 GROUP 1 SCALE ~ DRAWN BY APPROVED BY

TITLE: OUTLINE DRAWING W/"C" FACE MOTOR ADAPTOR

DATE: 10/31/02 DRAWING NUMBER: C40218 REV.